

OUR RESULTS

At United Way of Southeast Louisiana, we make sure your dollar goes further by working at all levels of society to create meaningful change, maximizing your donation, and meeting your community's specific needs.

The results? Poverty is reduced, communities are strengthened, and residents throughout the region have their lives transformed because of our proven approach and your generous investment.

\$79.8 M

in advocacy wins for early care & education programming for low-income Louisiana families

\$9.5 M

returned to the community through our VITA (Volunteer Income Tax Assistance) free tax help program

\$235K

in disaster recovery including long-term recovery and immediate response

These are only a few examples of how your donation makes our community a better place to live, work, and raise our families. Invest in your community today at UnitedWaySELA.org/Give.

WHAT WE DO

United Way fights for the **health, education, and financial stability** of every person in every community.

THE PROBLEM



1 in 2 households in Southeast Louisiana struggles to make ends meet.

THE PLAN



Our **Blueprint for Prosperity** provides a roadmap to tackle poverty - the root cause of many of the social problems in our region.

THE SOLUTION



By improving the health, education, and financial stability of every person, we help everyone have the **best chance to recover from a setback, build a stronger life, and reimagine what's possible for the future.**



OUR MISSION

To eradicate poverty in Southeast Louisiana.

OUR VISION

Equitable communities with health, education, and financial stability for us all.

NEED HELP? DIAL 211

Dial 211 to connect to health and human service needs in your area.

2-1-1

HELP SOMEONE TODAY

Make a donation at UnitedWaySELA.org/Give.

CONNECT

Visit our home on the web UnitedWaySELA.org. Follow us on social media [@UnitedWaySELA](https://UnitedWaySELA.org) on Facebook, Instagram, Twitter, & LinkedIn.

United Way of Southeast Louisiana
serving Jefferson, Orleans, Plaquemines, St. Bernard,
St. Tammany, Tangipahoa, and Washington parishes

Jefferson, Orleans, Plaquemines, and St. Bernard
504.822.5540
St. Tammany, Tangipahoa, and Washington
985.778.0815

UnitedWaySELA.org



Scan Code
to Give

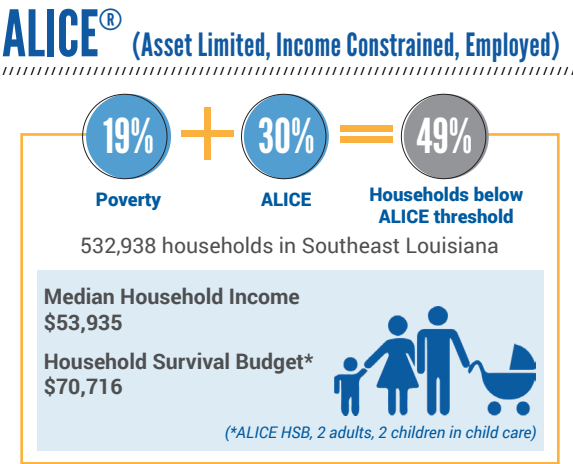
UNITED WAY:
YOUR IMPACT
STARTS HERE



WHO WE ARE

For close to 100 years, United Way of Southeast Louisiana has been working to meet the needs of vulnerable families in our region.

No matter the crisis, we remain committed to taking care of our community in Jefferson, Orleans, Plaquemines, St. Bernard, St. Tammany, Tangipahoa, and Washington parishes. We help the most vulnerable among us, including ALICE households.



Our world looks different than anyone imagined a few years ago. Whether it's because of Hurricane Ida, COVID-19's economic impact, or inflation – it's a challenging time. These crises amplified issues we're already tackling, like disparities in health, education, and financial stability. That's why nonprofit partners and government officials turn to United Way for help.

Together, we can make more impact than any one of us could create alone!

GIVE TODAY at UnitedWaySELA.org/Give

HOW WE HELP

It's no exaggeration that the most vulnerable – including low-income families, people of color, and anyone who was barely getting by before – are struggling more than ever.

Because of our donors, United Way is stepping up to respond, as we always do. We're helping people deal with immediate needs. But we're also helping communities recover and rebuild.



"I'm really happy that we found United Way. That help is there as a hand up and not a handout."

Maggie and Dale were struggling to save to buy a home while dealing with increasing rent and expenses. They found United Way of Southeast Louisiana's IDA Project and worked with a financial coach to develop a plan to save for the down payment. They also completed trainings to prepare them for the journey of homeownership,

Because of the support of people like you, Maggie and Dale purchased a home and moved from barely surviving to thriving.

YOUR DOLLARS AT WORK

Thanks to you, we raised

\$12,183,489 in 2021-2022

Because of your support, our collective impact model generated

\$79,829,959 in public policy investments and savings through advocacy wins

\$9,140,810 in Volunteer Income Tax Assistance program returns

\$1,736,382 in Emergency Food & Shelter Program grants

\$627,511 in SingleCare prescription savings

\$126,679 in economic impact through volunteerism

\$1,999,135 in asset purchases through Individual Development Accounts (IDA)

= \$93,460,476

generated in community impact in 2022-23 and beyond

\$1 DONATED GENERATED \$7.67 IN COMMUNITY IMPACT

PLEDGE FORM



THANK YOU for supporting our community.

ABOUT YOU

NAME

ADDRESS

CITY, STATE, ZIP

PERSONAL EMAIL (REQUIRED TO RECEIVE DONATION VERIFICATION)
☐ Check to opt-in to our newsletter, we will tell you about your impact.

WORKPLACE EMAIL (OPTIONAL)

- ☐ I prefer to remain anonymous.
- ☐ I am a United Way Loyal Contributor (10 years or more) & have been contributing to United Way for ____ years.
- ☐ I would like my gift to support Women United.

MY TOTAL CONTRIBUTION \$

PAYMENT METHOD

- ☐ Check Enclosed Amount \$ _____ Number: _____
- ☐ Send me a bill ☐ Monthly ☐ Quarterly ☐ Annually
- ☐ Credit/Debit Card Authorization Agreement for Credit/Debit Card charges to United Way of Southeast Louisiana.

I authorize United Way of Southeast Louisiana and the financial institution listed below to electronically charge my Credit/Debit Card starting on this date ____ / ____ / ____ and continue to bill my card ☐ Monthly ☐ Quarterly ☐ Annually for a total donation of \$ _____.

CARD TYPE ☐ American Express ☐ Discover ☐ MasterCard ☐ Visa

CREDIT CARD NUMBER

EXPIRATION DATE SECURITY CODE

DONOR'S SIGNATURE [REQUIRED FOR TRANSACTION] DATE