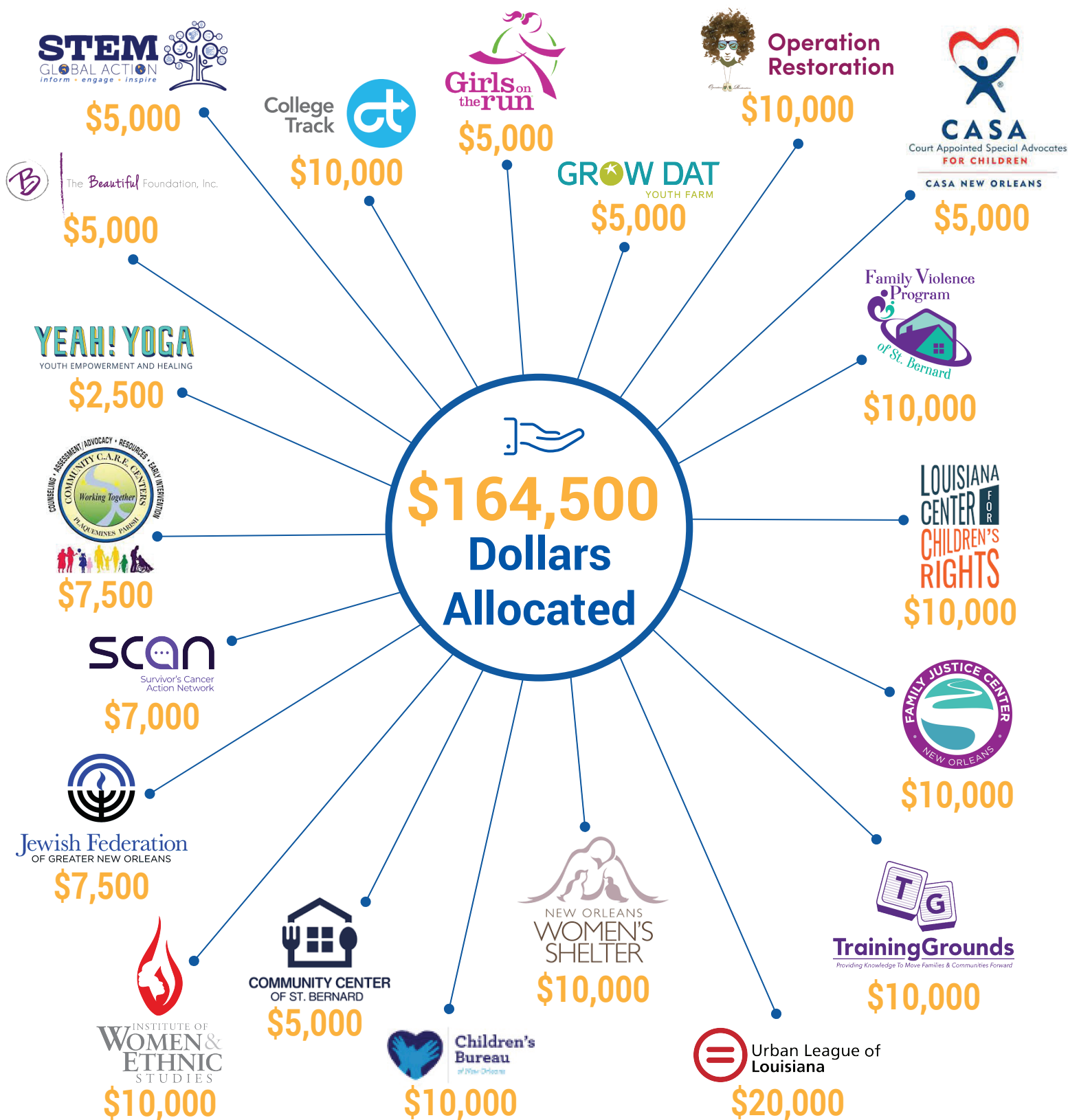


# YOUR GIFTS AT WORK

UNITED WAY OF SOUTHEAST LOUISIANA  
**WOMEN UNITED**  
Leading the Charge | Inspiring the Change



MORE THAN **\$3.9M** INVESTED IN THE COMMUNITY SINCE 2002

## DOMESTIC VIOLENCE AWARENESS & VIOLENCE AGAINST WOMEN & CHILDREN

### \*CASA New Orleans - \$5,000

#### *Advocacy in St. Bernard*

Provides one-to-one advocacy services for children that are most at-risk and often overlooked in our community. (SB)

### Family Violence Program of St. Bernard - \$10,000

Empowers and promotes domestic violence survivors' continuous growth and independent living from the power and control of others. (J, O, SB, ST, P, T, W)

### Louisiana Center for Children's Rights - \$10,000

#### *Children's Defense Team: Changing the Lives of Children in New Orleans' Juvenile Legal System*

Fights to keep children out of the legal system so they can thrive in their homes and communities through interventions and services necessary to help them grow up healthy. (O)

### New Orleans Family Justice Alliance Inc. - \$10,000

#### *Invest In Yourself*

Provides resources to domestic violence survivors that focus on securing or improving financial recovery and stability. (O)

## EARLY CHILDHOOD EDUCATION

### TrainingGrounds - \$10,000

#### *We PLAY Center*

Provides high-quality early care education for children ages birth to 4 and their caregivers in low-income households. (J, O, SB, ST)

### Urban League of Louisiana - \$10,000

#### *Clarence L. Barney Head Start Center*

Provides individualized learning experiences to promote children's readiness for school. (O)

### Urban League of Louisiana - \$10,000

#### *Project Ready*

Provides students with academic, life skills, and career readiness support to prepare them for high school graduation and post-secondary success. (O)

## HOMELESS OF WOMEN & CHILDREN

### New Orleans Women and Children's Shelter - \$10,000

#### *Ending Homelessness for New Orleans Families*

Helps diverse families build the capacity and skills they need to sustain independence in their own homes. (J, O)

## MENTAL HEALTH

### Children's Bureau of New Orleans - \$10,000

#### *Clinical Services*

Provides grief and trauma counseling to children and families. (O)

### \*Community Center of St. Bernard - \$5,000

#### *Food Pantry, Backpack, Hygiene Program*

Provides feminine products to clients struggling to afford these essentials due to inflation. (SB)

### Institute of Women & Ethnic Studies - \$10,000

#### *The Multisystem Compassionate Caring and Healing for Black Youth*

Promotes Black youth mental health in Louisiana by addressing how social, political, and economic systems shape behaviors and access to resources for Black youth. (O)

### Jewish Family Service Of Greater New Orleans Inc. - \$7,500

#### *Teen Life Counts (TLC)*

Provides free training sessions for students, teachers, school counselors, parents, and program volunteers to learn what resources are available to support youth in crisis. (J, O, SB, ST)

### \*SCAN: Survivor's Cancer Action Network - \$7,000

#### *Online Community*

Creates an online community for survivors and helps eliminate burdens placed on patients and caregivers. (J, O, SB, ST, P, T, W)

### Plaquemines Community CARE Centers Foundation, Inc. - \$7,500

#### *Substance Abuse Program*

Provides comprehensive assessments, drug education, counseling, and resource and referral services to individuals with substance abuse issues in Plaquemines Parish. (P)

### \*YEAH YOGA - \$2,500

Nurtures youth's physical and mental health, social-emotional development, healing, and resilience to empower young leaders and help reduce carceral system involvement. (J, O)

## WORKFORCE TRAINING & YOUTH EMPOWERMENT

### \*The Beautiful Foundation - \$5,000

Provides a safe environment for leadership development in underserved young women by focusing on self-esteem, entrepreneurial thinking, and emotional, mental and physical well-being. (J, O)

### Center for the Innovative Training of Youth d/b/a STEM Global Action - \$5,000

#### *STEM Fellows*

Supports BIPOC high-school students from low-income New Orleans communities pursue STEM careers. (O)

### College Track - \$10,000

#### *College Track New Orleans*

Ensures that all students, regardless of race or socioeconomic status, earn a college degree and achieve social mobility. (O)

### \*Girls on the Run - \$5,000

Empowers girls to be physically active while developing and strengthening important life skills. (J, O, P, SB)

### Grow Dat Youth Farm - \$5,000

#### *Grow Dat Youth Farm Leadership Programs*

Educates a diverse group of young people ages 15-24 on a seven-acre urban farm, where they learn about and practice sustainable agriculture, community leadership, and food justice. (O)

### Operation Restoration - \$10,000

#### *Operation Social Services*

Support for women and girls impacted by incarceration so they recognize their full potential, restore their lives, and discover new possibilities. (J, O, SB, ST, P, T, W)

*J = Jefferson Parish, O = Orleans Parish, P = Plaquemines Parish,*

*SB = St. Bernard Parish, ST = St. Tammany Parish, T = Tangipahoa Parish,*

*W = Washington Parish*

*All grants are three-year grants.*

*\*Denotes one-year discretionary grant.*